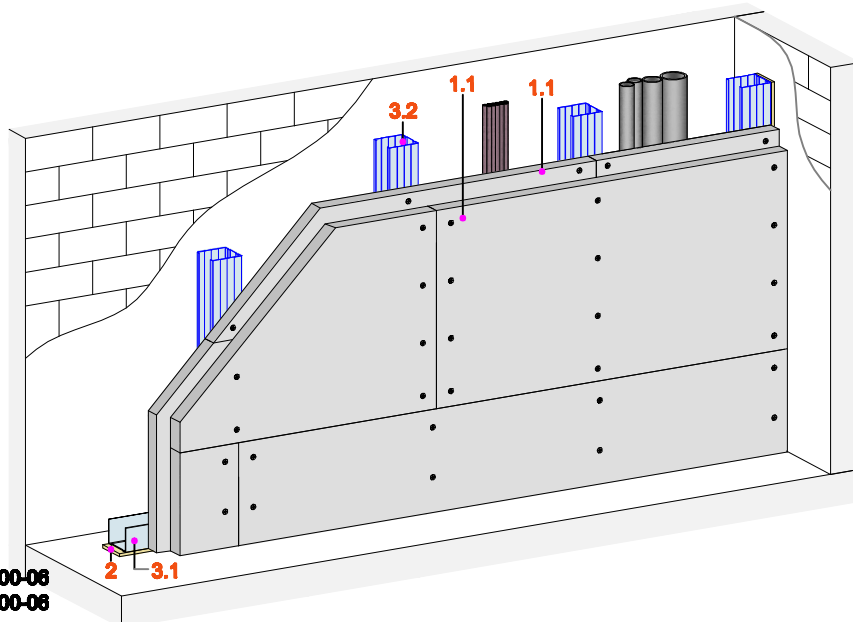
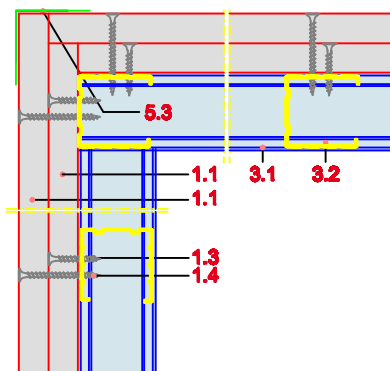


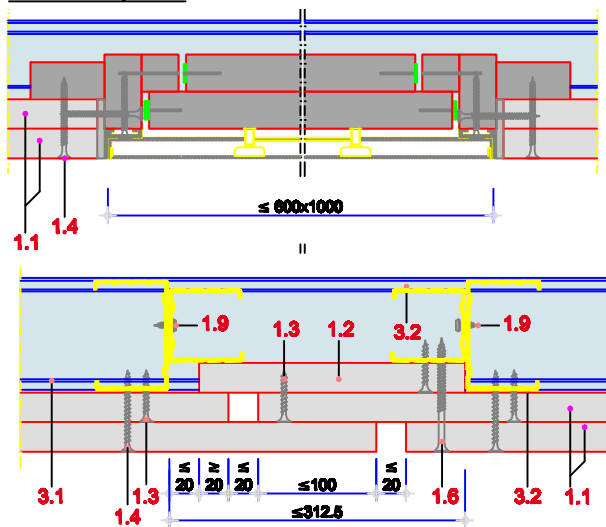
- 1.1 Glasroc F (Ridurit) 20
- 1.3 Glasroc F vijci 3,8 x 35mm
Razmak ≤ 600 mm
- 1.4 Glasroc F vijci 3,8 x 55mm
Razmak ≤ 250 mm
- 1.7 Rigips metalni tip DN 6
Razmak ≤ 500 mm za
plafonsku vezu
Razmak ≤ 1000 mm za
podni / zidni spoj
- 2 Rigips zvučno-izolacioni filc
- 3.1 Rigips zidni profil UW 50/75/100-06
- 3.2 Rigips zidni profil CW 50/75/100-06
- 4 Mineralna vuna dozvoljena
- 5.1 Rigips VARIO ispunjiva č spojeva
- 5.2 Rigips bandaž traka za ojačanje



Formiranje spoljnog ugla



**Revizorni otvor
Horizontalni presek**

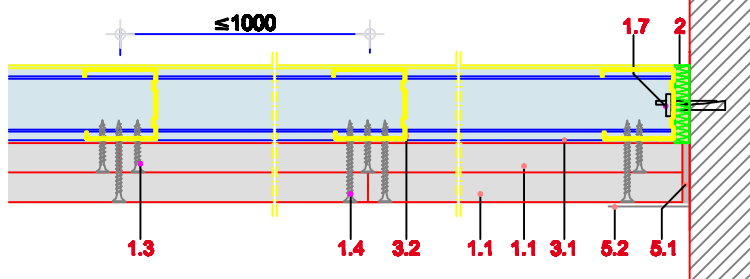


Bewegungsfuge

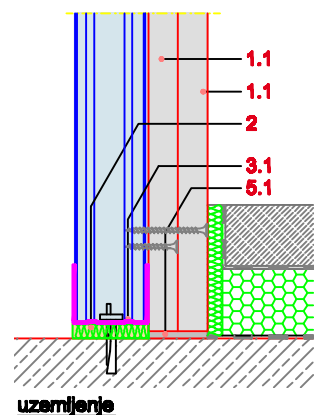
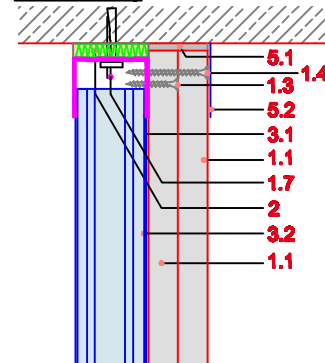
3.80.10

Šaht zidovi Rigips.

Rigips šaht zid otporan na požar EI 90
CW 50 + 2 x Glasroc F (Ridurit) 20
 Pogledati i detalje



Plafonski spoj



uzemljenje