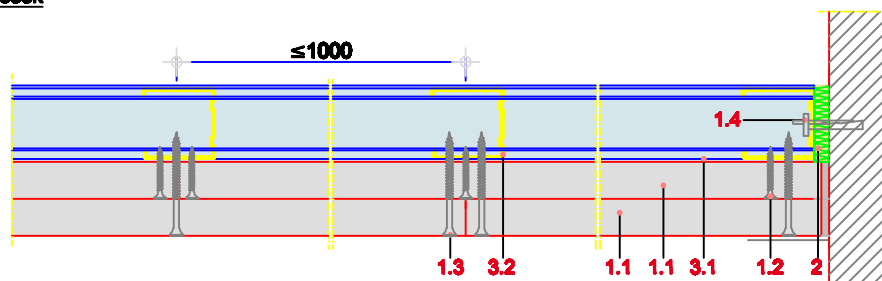
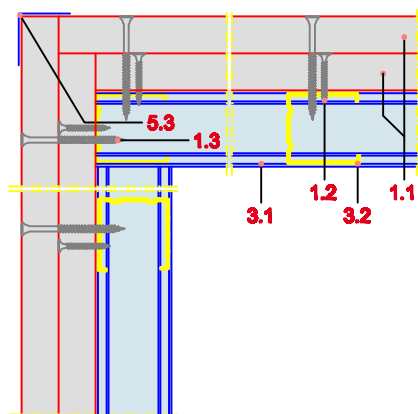


**Horizontalni presek**

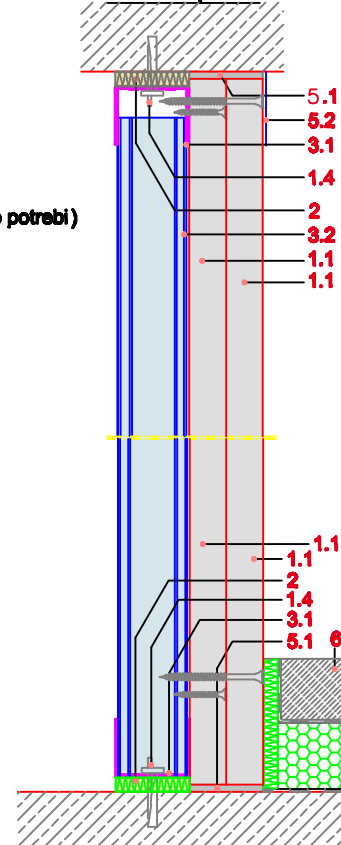


**Formiranje spoljnog ugla**

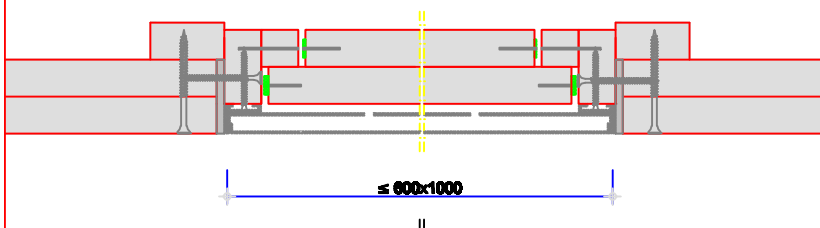


- 1.1 Die Dicke 25
- 1.4 Rigips tipl
- 2 Rigips zvučno-izolacioni filc
- 3.1 Rigips zidni profil UW 50-06
- 3.2 Rigips zidni profil CW 50-06
- 5.1 Rigips VARIO ispunjiva č spojeva
- 5.2 Rigips bandaž traka za ojačanje
- 5.3 Rigips ugaona za štitna lajana (po potrebi)
- 6 plivajući (ili suvi) estrih

**Vertikalni presek**



**Revizioni otvor**  
**Horizontalni presek**



**3.80.11 Šaht zidovi Rigips.**  
**Rigips šaht zid otporan na požar EI 90**  
**CW 50 / 75 / 100 + Die Dicke 25**  
**Pogledati i detalje**