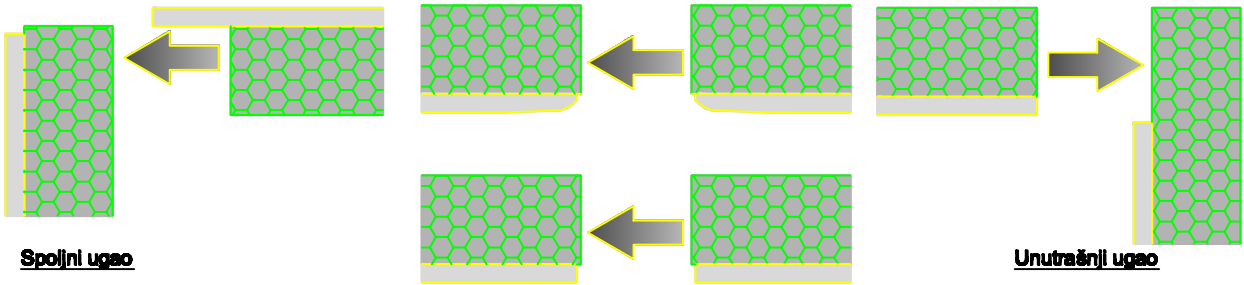
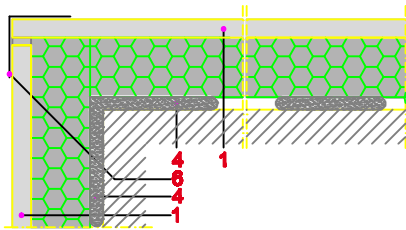


Spoj ploča

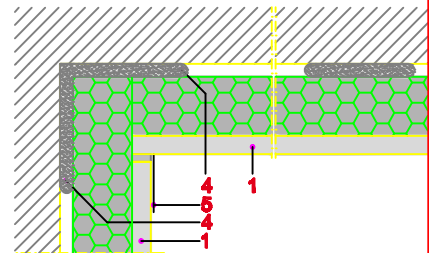


Spoljni ugao

Unutrašnji ugao

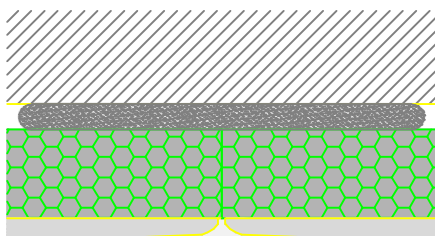


Formiranje spoljnog ugla



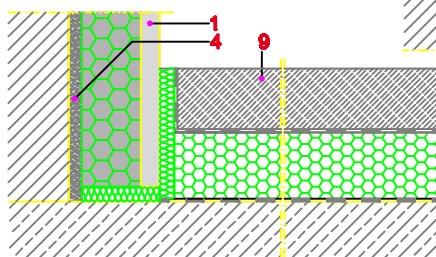
Formiranje unutrašnjeg ugla

- 1 Rigitherm 032 kaširana ploča (po potrebi koristiti parnu branu)
- 2 Rigips Thermoplatte
- 3 Rigips Thermoprofil
- 4 Rifix ThermoPlus
- 5 Bandaž traka za ojačanje
- 6 Rigips AquaBead
- 7 Viažni malter
- 8 Rigips spuštani plafon
- 9 Plivajući (ili suvi) estrih



Pittenstoß

Fußbodenanschluss



Spoj zida na viažni malter



3.20.40 Oblaganje zidova Rigips. Sučeljavanje Rigitherm 032 kaširanih ploča

Pogledati i detalje